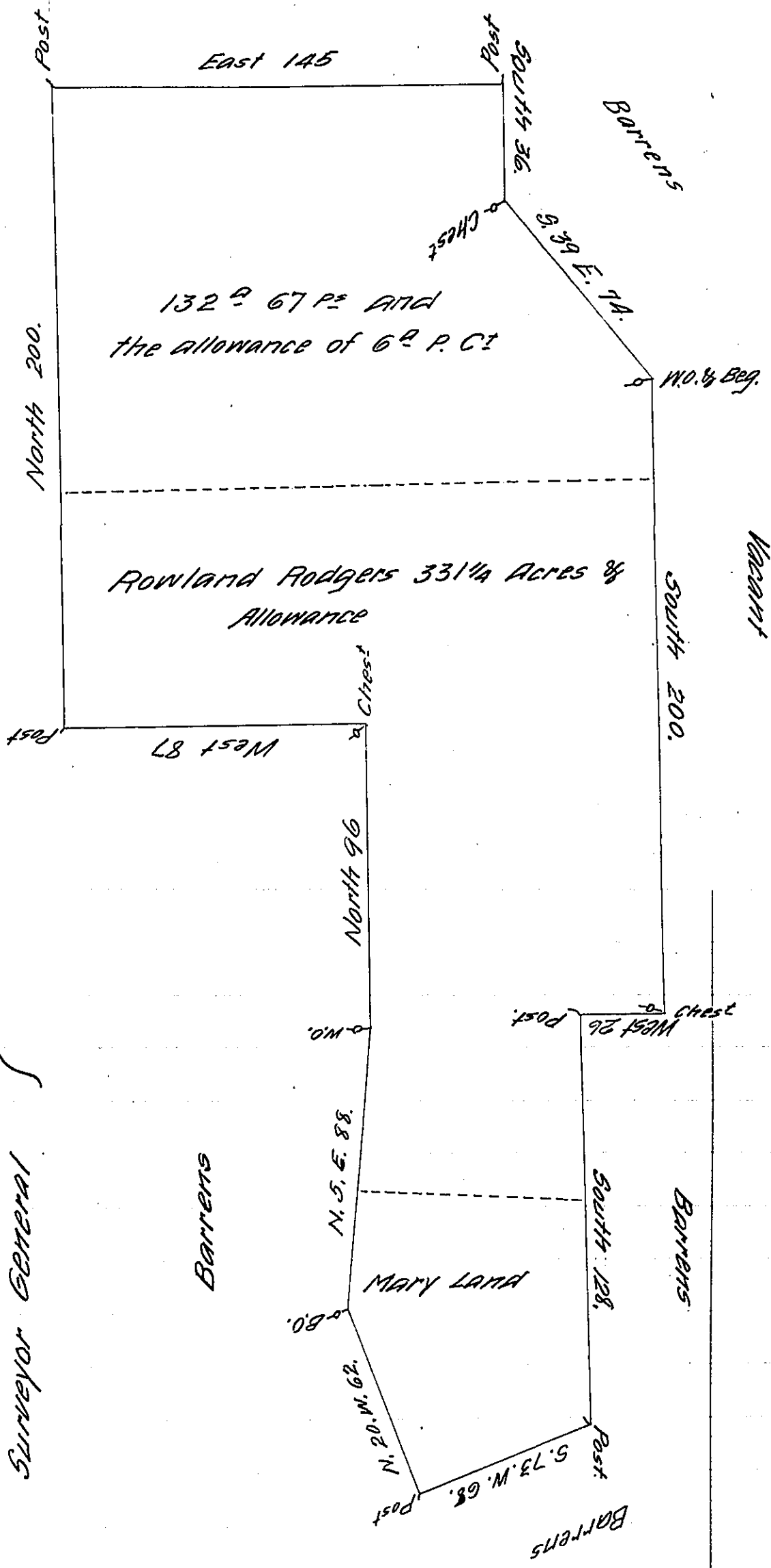


Barrens

A Draught of a Tract of Land situate in Shrewsbury Township in the County of York containing three Hundred thirty one acres & one quarter and the Allowance of six Acres per Cent for Roads & High ways. Surveyed for Rowland Rodgers the 3<sup>rd</sup> day of April 1753. in pursuance of a Warrant bearing <sup>date</sup> the 1<sup>st</sup> day of April 1751.

P. Geo Stevenson D.V.S.  
Barrens

To Nicholas Scull Esq.  
Surveyor General



IN TESTIMONY that the above is a copy of the original remaining on file in the Department of Internal Affairs of Pennsylvania, made conformably to an Act of Assembly approved the 16th day of February, 1833, I have hereunto set my Hand and caused the Seal of said Department to be affixed at Harrisburg, this twenty eighth day of November 1911.

*Nancy Howell*  
Secretary of Internal Affairs.